

TAXING UNIT: 25

N.E. 1/4 OF S.E. 1/4
SECTION 17, T.6N., R.1W., S.L.B. & M.
IN OGDEN CITY SCALE 1" = 100'

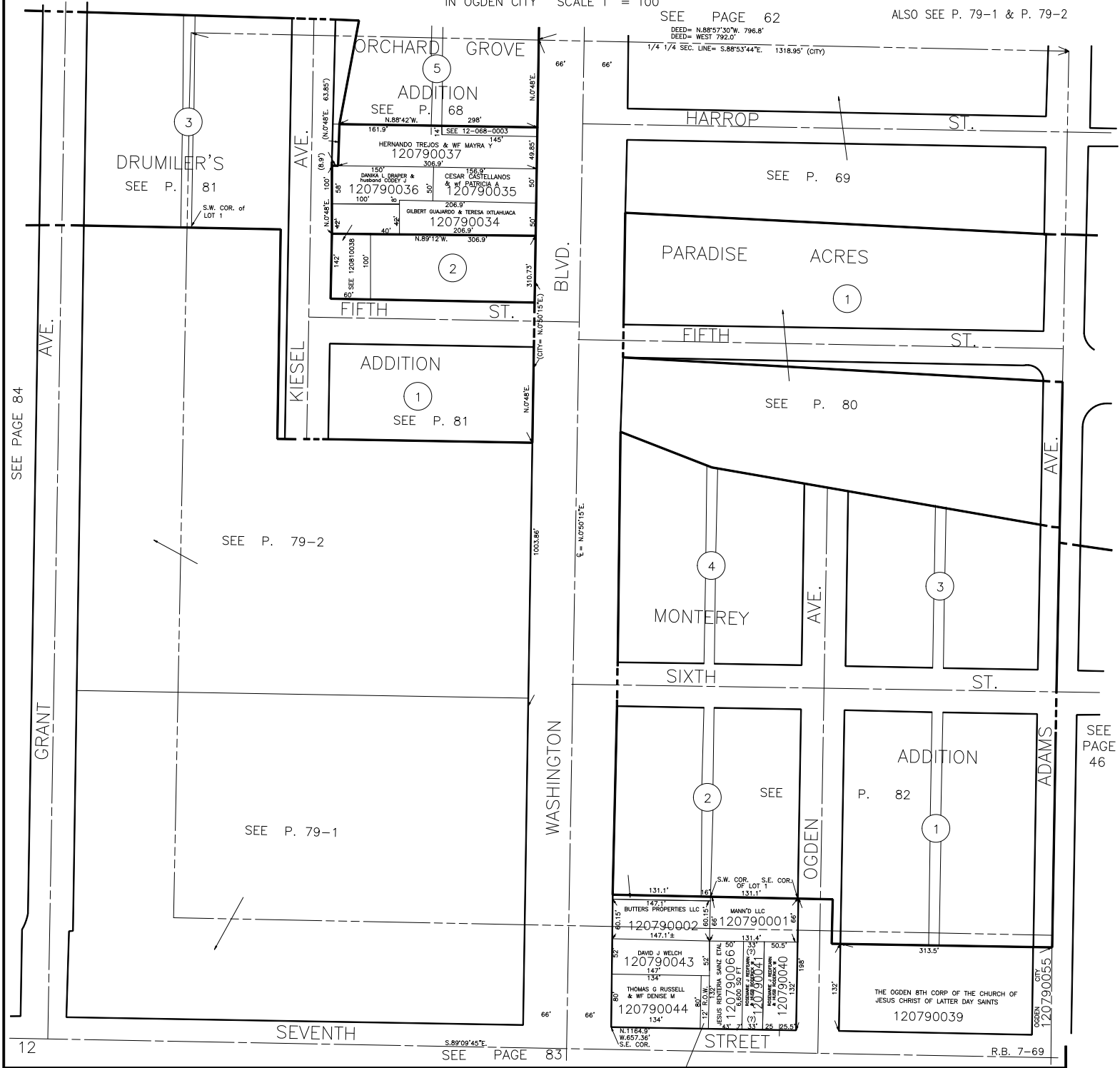
79

SEE PAGE 62

ALSO SEE P. 79-1 & P. 79-2

DEED= N.88°57'30"W. 796.8'
DEED= WEST 792.0'

1/4 1/4 SEC. LINE= S.88°53'44"E. 1318.95' (CITY)



SEE PAGE 84

GRANT AVE.

12

SEE P. 79-2

SEE P. 79-1

SEVENTH

SEE PAGE 83

ORCHARD GROVE

ADDITION
SEE P. 68

DRUMILER'S
SEE P. 81

KIESEL AVE.

HERNANDO TREJOS & WF MAYRA Y
120790037

DANIEL CRAPER & HERNANDEZ CRUZ
120790036

CESAR CASTELLANOS & WF PATRICIA
120790035

GILBERT GUARDADO & TERESA IKTLAHUACA
120790034

ADDITION
SEE P. 81

FIFTH ST.

WASHINGTON BLVD.

HARROP ST.

SEE P. 69

PARADISE ACRES

FIFTH ST.

SEE P. 80

MONTEREY

SIXTH ST.

OGDREN AVE.

ADAMS AVE.

ADDITION
SEE P. 82

OGDREN CITY
120790055

R.B. 7-69

THE OGDEN 8TH CORP. OF THE CHURCH OF JESUS CHRIST OF LATTER DAY SAINTS
120790039

(JESUS RENTERIA SAINZ ETAL)
120790042
1040 SQ FT

SEE PAGE 46